

SECTION 35, TWP. 60N., RNG. 4W., B.M. BONNER COUNTY, IDAHO

FND. ALUMINUM MONUMENT, RLS No. 3628



SCALE - 1" = 100'



BASIS OF BEARING

RECORD OF SURVEY FILED BY JAMES R. STAPLES, RLS No. 3920, RECORDER'S NO. 313233.

SURVEYOR'S NOTE

THIS SURVEY WAS PERFORMED USING A 6 SECOND THEODOLITE WITH ELECTRONIC DISTANCE METER. THE LINEAR ERROR OF CLOSURE OF THE RANDOM TRAVERSE, PRIOR TO ANY ADJUSTMENT, WAS 1:24,103.

NOTE:

50' R-O-W IS BASED ON PHYSICAL TIES TO EXISTING CENTER LINE OF EAST SHORE ROAD.



FND. ALUMINUM MONUMENT, RLS No. 3628

SURVEYOR'S CERTIFICATE

THIS MAP CORRECTLY REPRESENTS A SURVEY MADE BY ME OR UNDER MY DIRECTION IN CONFORMANCE WITH THE REQUIREMENTS OF THE "SURVEY RECORDING ACT" AT THE REQUEST OF PETER & SHARON BERUBE.

DATE 8-21-97 Peter & Sharon Berube
JANDY R. HOISINGTON, RLS No. 6019

LEGEND

- SET 3/4" REBAR W/ALUMINUM CAP, PLS No. 6019.
- FOUND CORNER AS NOTED.
- () INFORMATION BASED ON R-O-S #313233 BY RLS No. 3628

1/16 LINE

S 1/16

1320.94'
1320.26'

S-S 1/16

155.52'

(S89°31'17"E
S89°30'10"E)

1990.51'
(1989.42')

(1985.00)
1985.88'

C-E-SW
1/64

S80°05'21"E
(S80°05'21"E)
BASIS OF BEARING
S-E-SW
1/64

Riggs

PARCEL 1 13.75 ACRES

30' WIDE ACCESS AND UTILITY EASEMENT OVER EXISTING DRIVEWAY TO BENEFIT PARCEL 2

S78°25'17"E 8.13'
109.78'
68.84'
S20°54'46"E 108.88'
S86°27'25"W

Pecora

PARCEL 2 12.44 ACRES

FND. ALUMINUM MONUMENT, RLS No. 3628

SW-SE-SW
1/256

FND. ALUMINUM MONUMENT, RLS No. 3628

C-S-SE-SW
1/256

N89°40'52"W 330.55'
(N89°40'00"W 330.47')

S80°11'34"E
(S80°08'14"E)
328.47'
328.65'

W-E-W
1/256

FND. ALUMINUM MONUMENT, RLS No. 3628

FND. 1/2" REBAR

34 35

FND. ALUMINUM MONUMENT, RLS No. 3318

N.T.S. 17.09'
(17.29')

N89°43'42"W
(N89°43'28"W)

1651.26'
(1650.48')

COUNTY RECORDER'S CERTIFICATE

FILED FOR RECORD THIS 21ST DAY OF October 1997, at 2:11 PM THE REQUEST OF JAMES A. SEWELL and ASSOCIATES.

RECORDER'S CERTIFICATE No. 512691

MARIE SCOTT by P. Schauer
COUNTY RECORDER



SECTION 35, TWP 60N, RNG 4W, B.M. SHEET TITLE:
SURVEY FOR PETER & SHARON BERUBE

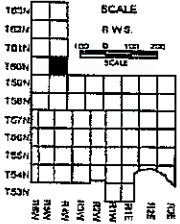
James A. Sewell and Associates
CONSULTING ENGINEERS
NEWPORT, WASHINGTON, 99156, (509)447-3626

DATE: 20-97
SCALE: 1" = 100'
DRAWN: DEH/gmc
CHECKED: RRH
DATE: 10-1-97
SHT. 1 OF 1

THIS DRAWING IS TO BE USED FOR REFERENCE PURPOSES AND THE COUNTY IS NOT RESPONSIBLE FOR ANY INACCURACIES HEREIN CONTAINED

BONNER COUNTY

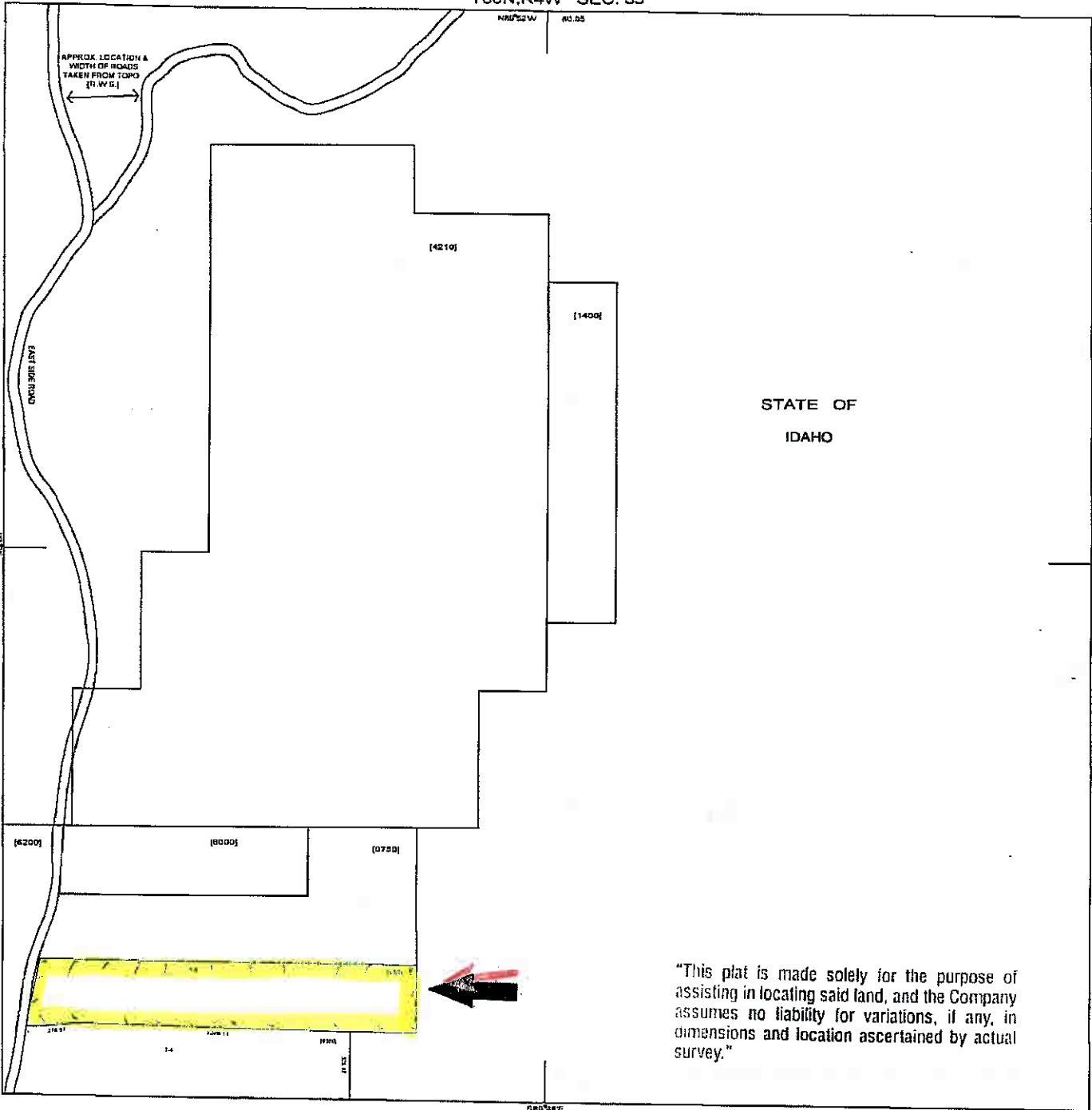
[3300]



6	5	4	3	2	1
7	8	9	10	11	12
13	17	16	15	14	13
19	20	21	22	23	24
30	29	28	27	26	25
31	32	33	34	35	36

DATE DRAWN	02/04	DRAWN BY	R.W.S.
REVISION MADE		DATE	CHECK BY
1000	1000	07/04	R.W.S.

160N, R4W SEC. 35



STATE OF IDAHO

"This plat is made solely for the purpose of assisting in locating said land, and the Company assumes no liability for variations, if any, in dimensions and location ascertained by actual survey."

080414E



ALLIANCE

TITLE & ESCROW CORP.

105 Pine Street
Sandpoint, ID 83854
Tel: (208)263-2125
Fax: (208)263-1784
www.alliancetitle.com

geoAdvantage

www.digitbase.org 208.777.1252